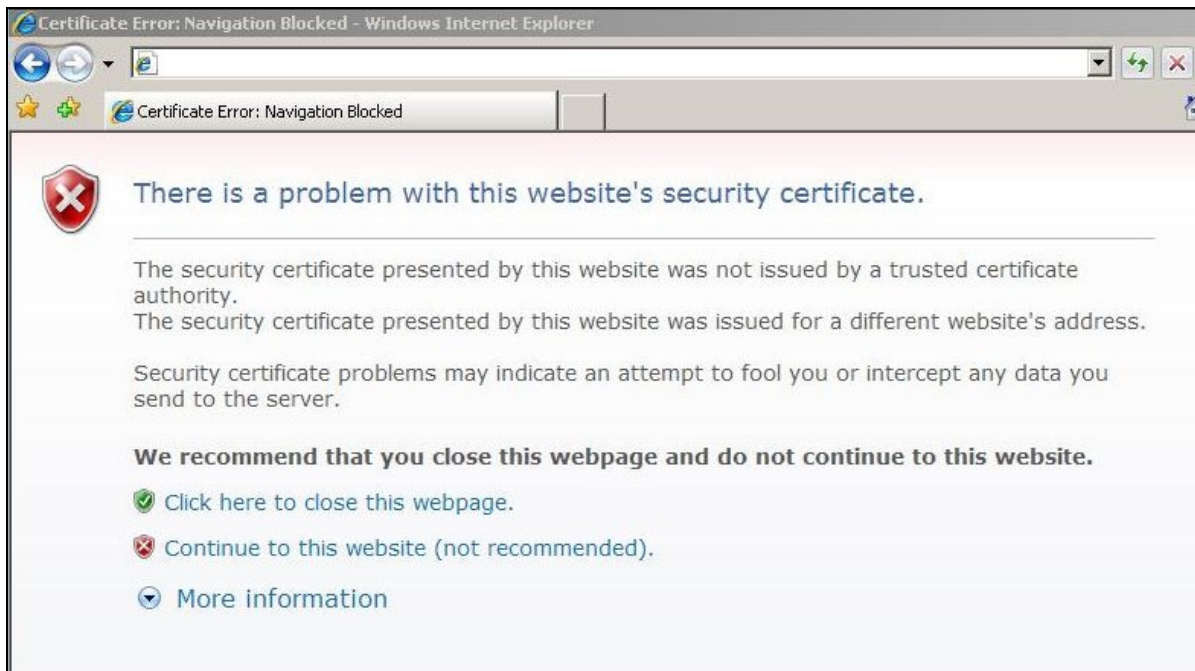


Wireless Hamilton Tips

1 – The first step is always establishing a wireless connection from your computer to the network. One tip is that if you can see the network being advertised (“WIRELESSHAMILTON”) but cannot connect chances are you are not close enough to an access point. The small antenna on most personal computers is capable of receiving the signal being broadcast, but they are not always powerful or close enough for the network to receive the signal back.

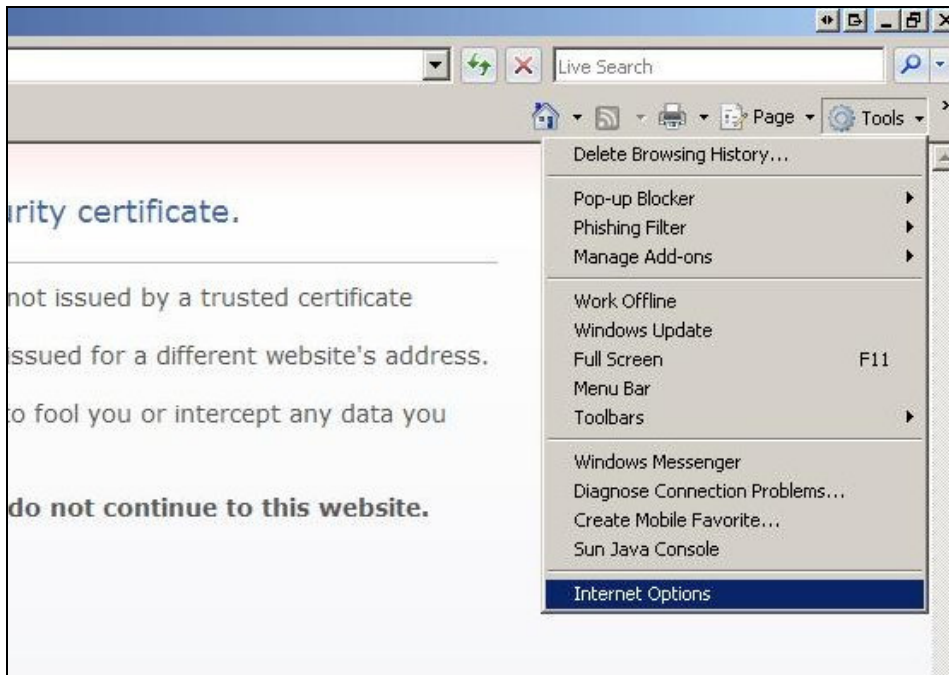
2 – www.wirelesshamilton.com has a “free” SSL security certificate in-use. For Internet Explorer 7 users will be presented with the following introductory screen:



The tip here is that users will have to click “Continue to this website” to proceed to www.wirelesshamilton.com.

3 – In order to use www.wirelesshamilton.com it is necessary that your browser support Javascript and scripting. Browsers can easily lose their default security settings. If you are not sure what your settings are, or what they should be, you can follow these basic steps to correct most issues.

To reset settings for Internet Explorer, access the Internet Options menu:



Next, click Security tab, then select Internet zone by clicking the globe icon, then click Default level and/or Reset all zones to default level. Click OK to complete.

